



# COMPANY PROFILE

PT Bogor Life Science and Technology

# 2026



Holding Company  
of IPB University

[www.blst.co.id](http://www.blst.co.id)



# Company Profile



## Table of Content

Company Outline.....01

Core Values.....02

Vision & Mission.....03

Leaders Team.....04

Business Portfolio .....05

 **Expertise Based**

PT Prima Kelola IPB .....06

PT Penerbit IPB Press .....08

PT Global Scholarship Services Indonesia.....10

 **Food Based**

PT Serambi Botani Food Industry .....12

PT Botani Seed Indonesia .....14

 **Science Based**

PT Biomedical Technology Indonesia.....16

 **Finance Based**

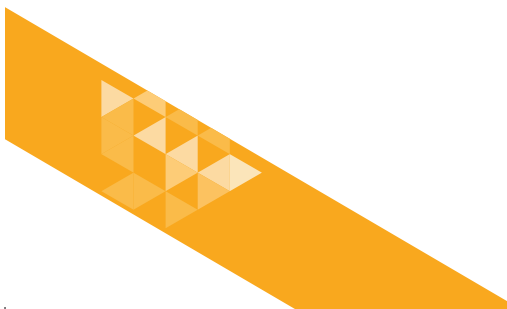
PT BPRS Botani Bina Rahmah.....18

 **Property Based**

IPB International Convention Center  
& Hotel.....20

Botani Square Mall .....22

Hotel Santika .....23





## Company Outline

PT Bogor Life Science and Technology (BLST) is the holding company for the Commercial Business Unit (SUK) of the IPB University which was established based on MWA-IPB Decree No. 18/ MWA-IPB/2003.


### Date of Establishment

November 17, 2003

### Shareholders

IPB University.....24,997 shares  
Employee Cooperative of IPB University.....3 shares

 Jalan Taman Kencana No. 3 Bogor City  
West Java Indonesia, 16128

 (+62251) 8384422

 info@blst.co.id

 www.blst.co.id

### Legal Basis


- Decree of MWA IPB No. 18/ MWA-IPB/2003
- Deed of Incorporation Number 4, November 17, 2003
- Deed of Last Amendment Number 1 November 8, 2021

### Business Line

**Business Identification Number :**  
**9120007851791**

Line of business activities in Holding Company, Head Office Activities, Wholesale Forestry and Hunting Products, Star Hotels, Catering Services for Specific Events, Organizing Meetings, Travel, Incentives, Conferences and Exhibitions, & Event Organizer.

 blstipb

 BLST : Holding Company of IPB

 BLST IPB

## Core Values

### **Bold**

Lead boldly by embracing challenges, taking decisive actions, and inspiring others to push beyond limits.

### **Loyal**

Commit loyally by honoring our mission, standing by our partners, and showing unwavering dedication in every step we take.

### **Science Based**

Apply scientific principles by grounding every innovation in research, analyzing data responsibly, and transforming knowledge into practical solutions.

### **Trustworthy**

Deliver with integrity by being transparent, keeping our promises, and consistently acting in the best interest of those who rely on us.



# Vision & Mission

## Vision

To become the holding company of IPB University based on the best and leading innovation and expertise to advanced the competitive and sustainable Indonesian agricultural, marine, and tropical bioscience industries.



## Mission

1. Presenting and commercializing the best innovations and expertise of IPB University to create a more competitive and sustainable future for the agricultural, marine, and tropical bioscience industries in Indonesia.
2. Collaborate closely and synergize with all IPB University institutions and other institutions at home and abroad in presenting and commercializing IPB University innovations and expertise.
3. Developing the entrepreneurship of the younger generation of civitas academics and alumni of IPB University as well as the Indonesian people.
4. Provide financial benefits for IPB University to build world-class educational institutions.
5. Providing commercial value and appreciation for IPB University's innovation and expertise to improve welfare.

## Leaders Team

Meet our amazingly-talented of individuals



**Tridoyo Kusumastanto**

President Commissioner



**Erika Budiarti Laconi**

Commissioner



**Sudradjat**

Commissioner



**Ahmad Mukhlis Yusuf**

Commissioner



**Luhur Budijarso**

Director

# Business Portfolio



## Expertise Based

**ipb consulting**

PT Prima Kelola IPB



PT Penerbit IPB Press



PT Global Scholarship Services Indonesia



## Food Based



PT Botani Seed Indonesia



PT Serambi Botani Food Industry



## Science Based



PT Biomedical Technology Indonesia



## Finance Based



PT BPRS Botani Bina Rahmah



## Property Based



SBU IPB International Convention Center, IPB Convention Hotel, & Plaza Botani



PT Bogor Anggana Cendekia



PT Grahawita Cendekia



## PT PRIMA KELOLA IPB

IPB Consulting is a professional organization that manages the academic and professional capabilities of IPB human resources in partnership for community development. IPB Consulting professionally serves the needs of its partners with a professional work system based on an agreement outlined in the form of a cooperation agreement.

### Vision

To become the first choice professional consulting services company by providing reliable and leading expertise, innovation and technology.

### Mission

1. Providing independent and customer oriented expert, innovation and technology-based services
2. Providing maximum performance for stake holders through the company's business growth
3. Developing a consulting service ecosystem to provide the best consulting service experience for both partners



**Sulistianawati**

Director

**PT PRIMA KELOLA IPB**  
Kawasan Science Techno Park - IPB University  
Jl. Taman Kencana No.3, RT.03/RW.03, Babakan,  
Kecamatan Bogor Tengah, Kota Bogor,  
Jawa Barat 16128  
Phone: +62 812 1100 170 (Whatsapp),  
+62 251 8320221 (Telepon)  
Email: contact@primakelola.co.id,  
primakelola@yahoo.co.id

- ipbconsulting.id
- ipbconsulting
- Prima Kelola IPB Consulting
- Prima Kelola IPB Consulting
- www.primakelola.co.id

# Product & Services



**Consultant Services**

Consulting services are provided either to individuals, companies, state-owned enterprises or other insitutions.

1. Feasibility study, Business plan
2. Business development
3. Strategic plan, master plan, blue print
4. Area mapping and development
5. Post-mining reclamation
6. Environmental study
7. Satisfaction survey
8. Technical assistance



**Trainings, Benchmarking, and Event Organizer**

Training and benchmarking studies to improve technical and managerial analysis skills in agro-industry and agribusiness. As well as, providing full support in planning, up to the implementation of the event.

1. Banking training
2. Industry analysis training
3. HR development training
4. Retirement preparation training
5. Entrepreneurship training
6. MSME development training
7. Overseas and domestic workshops, seminars & benchmarking



**Management Contracts**

Management contracts are provided to partners for business and non-business activities:

1. Management of social and environmental responsibility (CSR/PKBL)
2. Management of corporate training and University



**Technical Assistances, Monitoring, and Evaluation**

Assistance for corporate companies in the form of technical assistance, business development, monitoring evaluation and assistance for credit restructuring in the plantation sectors as well as evaluation and assistance for MSMEs in their business development.

# Client/Partner





## PT PENERBIT IPB PRESS



A subsidiary of BLST that is involved in publishing and printing books and scientific journals, as well as printing various products other than books.

As part of its business development, IPB Press has reached national and international markets and eventually evolved from a printed book publishing business to a printed and digital content business. Here are the business developments that have been and are being carried out by IPB Press:

- Publishing
- Printing
- Book Store
- Publishing course
- University Press Management
- Journal Partner
- Ebook corner
- Digital content
- Clothing
- International Publisher Distributor

### Vision

To be an excellent university press in the literacy world to inspire a continuous life by honouring integrity and innovation in agriculture, marine, and tropical bioscience.

### Mission

1. Building the corporate value to keep the spirit, consistency, and persistency to realize the vision of IPB Press.
2. Collaborating with businesses and industries to optimize the benefits of the best works of the authors.
3. Improving the service to the customers to actualize the service excellence.



**Erick Wahyudiono**

Director

- PT Penerbit IPB Press**  
Taman Kencana Street 3<sup>rd</sup>, Bogor 16128  
Phone. 0251-8355 158 E-mail: ipbpress@apps.ipb.ac.id
- Penerbit IPB Press
- ipbpress.official ipbpress.com
- IPB Press Bookstore

# Product & Services



**Publishing**

Provide editing, designing, printing, and making the content available to the public.



**Book Store**

A retail outlet, either offline store or online store, where customers can purchase books.



**International Publisher Distributor**

Specializes in distributing books and other published materials across global availability and reach for authors and publishers.



**Ebook Corner**

This section offers electronic books (ebooks) for purchase and download to readers who prefer digital formats over printed books.



**Journal Partner**

Collaborations or partnerships with academic or professional journals to publish and distribute research papers, articles, or other scholarly content.



**Digital Content**

Refers to any content that is produced, distributed, and consumed in digital form, like online articles, videos, or other multimedia content.

# Client/Partner





## PT GLOBAL SCHOLARSHIP SERVICES INDONESIA



**Muhammad Sigit Susanto**

Director

**IPB TRAINING**  
**(PT Global Scholarship Services Indonesia)**

Taman Kencana Street 3<sup>rd</sup>, Bogor 16128  
Phone. (+62) 251 838 2223/ 837 2400  
E-mail: contact@ipbtraining.com

- @ipbtraining dan @ipbtraining.official
- IPB Training IPB Training
- ipbtraining.com

IPB Training (PT Global Scholarship Services Indonesia) is a leading integrated solution provider for developing human resources (HR) competency. With over a decade of experience since its establishment on 12 March 2009, IPB Training consistently grows and excels in improving personnel competence to meet the dynamic needs of the business and industrial world.

IPB Training organizes a diverse range of HR development programs divided into three main portfolios: Technical Skill Development Program (TSDP), Language Skill Development Program (LSDP), and Leadership Management Development Program (LMDP). IPB Training offers comprehensive courses, training, mentoring, and certified tests/exams on a regular and tailor-made basis to ensure professional growth and success.

### Vision

To become a trusted and reliable excellence hub in the field of applied science-based human resource expertise/skills development.

### Mission

1. Disseminating IPB's valuable expertise with the wider community
2. Offering high-quality expertise and skill development solutions
3. Generating revenue for IPB University

# Product & Services



(TSDP)

## Technical Skill Development Program

This portfolio includes personal technical skills development programs that cover several categories:

- Veterinary medicine and biomedicine
- Food and nutrition
- Pest management
- Agriculture, fisheries, and animal husbandry
- Forestry and environment
- Business, economics, and management
- Laboratory
- Statistics and data science



(LMDP)

## Leadership Management Development Program

This portfolio offers dynamic programs tailored to elevate sustainable leadership and managerial skills. Our customized programs are meticulously crafted to align with your organization's distinct needs and ensure the attainment of expected competency milestones.



(LSDP)

## Language Skill Development Program

Our comprehensive portfolio encompasses language skills development programs, including courses, language proficiency certification tests, and translation services. Through strategic partnerships with international institutions, we guarantee global recognition for your language skills.

# Client/Partner





# PT SERAMBI BOTANI FOOD INDUSTRY

A subsidiary of BLST that is involved in operates in the field of food production resulting from IPB innovation.



PT Serambi Botani Food Industry is a subsidiary of PT Bogor Life Science and Technology (BLST) engaged in functional food. We are committed to developing innovative products continuously from Bogor Agricultural University experts with local Indonesian ingredients that are developed using sustainable technology. So, we can contribute to solving food issues in Indonesia which is to be at the forefront of national food diversification.

## Vision

To be functional food and beverage company to serve Indonesia and global markets.

## Mission

1. Develop, produce, and commercialize research-based food and beverage of IPB University expertise for ready to cook and ready to eat/drink.
2. Implement a progressive business strategy to develop the USP of local ingredients, technologies at sustainable platform in food security.
3. Create and innovate attractive functional food and beverage to meet the changing market with progressive business strategy.
4. Implement digital marketing to connect the consumers and customer from ingredient, packaging, formulation, and product to meet their insights



### Luhur Budijarso

Director

**PT SERAMBI BOTANI FOOD INDUSTRY**  
Kawasan Science Techno Park – IPB University  
Jl. Taman Kencana No.3, Bogor Tengah,  
Kota Bogor, Jawa Barat – Indonesia 16128  
Phone: 0813 6885 8359  
E-mail: info.fitsme@gmail.com

- fitsyourlifebetter
- fitsofficialstore
- fitsofficialstore
- www.fitsmandiri.com
- Fitsmeofficialstore

# Product



**Findmie Spaghetti Gluten Free**

Fit's Spaghetti: made from non-GMO corn flour, high protein, high fiber, gluten-free, chewy texture, suitable for gluten diets, autism, celiac, and sensitivity.



**Corn Rice**

Fit's corn rice: made from corn flour, low glycemic, high fiber, antioxidants, diabetes-safe, easy to cook, no washing needed, rice-like texture.



**Corn Flour**

Fit's corn flour: non-GMO, versatile gluten-free substitute, ideal for cakes, cookies, soups, muffins, with coarse (mesh 40) and fine variants (mesh 80).



**Chicken Seasoning Flour**

Fit's seasoned flour: mofaf-based, gluten-free, non-MSG, preservative-free, vegan friendly, easy for crispy fried foods like chicken, shrimp, fish.



**All-purpose Seasoning Flour**

Fit's seasoned flour: mofaf-based, gluten-free, no MSG, preservative-free, vegan, easy for crispy fried tempah, mushrooms, bakwan.



**Red Ginger Palm Sugar**

Red Ginger Palm Sugar: help boosts immunity, warms, relieves nausea and muscle aches, improves circulation, low glycemic index.

# Client/Partner





## PT. BOTANI SEED INDONESIA



BLST's subsidiary engaged in innovation-based food and horticultural seeds and trading of production facilities, mechanization and agricultural technology.



### Dadang Syamsul Munir

Director

**PT. BOTANI SEED INDONESIA**  
4<sup>th</sup> floor of Collaborative Research Center Building,  
Taman Kencana Street No.3, RT.03/RW.03, Babakan,  
Central Bogor district, Bogor City, West Java 16128

@botaniseed Botaniseed

@botaniseedipb

www.botaniseedipb.com

Botani Seed Indonesia 0812 9945 0708

Botani Seed IPB botaniseedipb

PT Botani Seed Indonesia is an integrated agriculture company based on expertise, innovation, and collaboration to improve the productivity and quality of Indonesian agriculture. Our main mandate is to commercialize the results of innovations from IPB University so that they can benefit all relevant stakeholders. Established in 2016, we have produced and commercialized more than 50 SKUs (Stock Keeping Units) of food crop and horticultural seeds throughout Indonesia and abroad. Besides, we also sell various types of organic and anorganic fertilizers and pesticides in collaboration with multi-national companies. With our expertise from IPB University, we have provided technological orchard development and other agribusiness services for more than 10,000 hectares of land. We are committed to being an important part in the advancement of sustainable agriculture in Indonesia and globally.

## Vision

To become an Integrated Agriculture company based on Expertise and Collaboration to improve the productivity and quality of Indonesian agricultural products for the welfare of stakeholders.

## Mission

1. Develop an industry and supply chain of seeds/seedlings that meet the 6 requirements (variety, quantity, quality, price, location, time).
2. Developing Integrated and Technological Agricultural Area Development Services based on Company Resources and Networks

# Product & Services



## Production and Marketing of Seeds and Seedlings

Production and marketing of food and horticultural seeds and seedlings.



## Technological Orchard Development Services

Modern services to develop high-quality orchards with the latest technology



## Other Technological Agribusiness Development Services

Agricultural business development services by utilizing technology for the advancement of agriculture



## Trade of Agricultural Production Inputs

Provide Agricultural Production Inputs such as seeds, fertilizers, pesticides, and others in order to help the needs of farmers



## Trade of Agricultural Mechanization Equipment and Services

Trade of modern agricultural equipment to increase agricultural productivity by utilizing the latest agricultural technology



## Trade of agricultural products for domestic and export markets

Trade of agricultural products both domestically and internationally from the farmer to the final consumer for better agricultural purposes

# Client/Partner





# PT. BIOMEDICAL TECHNOLOGY INDONESIA



**Luhur Budijarso**

Director

PT Biomedical Technology Indonesia (BMTI) is engaged in biotechnology and biomedical fields. Supported by expertise and innovation from IPB University. Providing product development and research solutions to address animal and human health problems with a biomedical and biotechnology approach

## Vision

Becoming a leading company in biotechnology and biomedicine for the human welfare

## Mission

1. Develop and commercialize of innovative products based on biotechnology and biomedicine
2. Collaboration with industry to optimize commercial benefits from biotechnology and biomedical products
3. Increase the value of commercial national products
4. Raising concern for the welfare and human health

**PT Biomedical Technology Indonesia**  
Burangrang Street 3<sup>rd</sup>,  
Taman Kencana Street, Bogor 16128  
Phone. +62 821 2265 9860  
E-mail: bti.blst@gmail.com

**Biomedical Technology Indonesia**

# Product & Services



## Trading Macaca Fascicularis

Macaca Fascicularis is one of the main factors in the production of polio vaccine. We provide Macaca Fascicularis by following very strict ethical and animal welfare procedures. The Macaca Fascicularis that we provide are supplied to polio vaccine manufacturing companies and companies that need Macaca Fascicularis for research purposes.



## Develop Avian Vaccine

Development and production of poultry vaccines for the prevention of avian influenza, ND, and other diseases. Vaccine development in collaboration with the School of Veterinary Medicine and Biomedicine IPB University to ensure the best quality



## Contract Research Organization

CRO is an integrated service to carry out research contracts in the biomedical and biotechnology fields including pre-clinical testing (toxicity testing, chronic sub-testing), efficacy testing, etc. Supported by experts from IPB University as a guarantee of the quality of test results.

# Client/Partner





## PT BPRS BOTANI BINA RAHMAH

BPRS Botani Bina Rahmah is a Sharia-compliant banking institution dedicated to providing high-quality service and innovation within the Sharia banking sector. Established in October 1992 with the support of KAHMI and ICMI Orwil Bogor, BPRS Botani has grown to become one of the leading BPRS, officially known as PT. BPRS Botani Bina Rahmah since April 2022. The company continues to focus on delivering innovative services aligned with Sharia principles while actively contributing to the betterment of the community.

### Vision

To become a role model for university-based banks that are farmable and support sociotechnopreneurship.

### Mission

1. To develop innovative financial services in accordance with Sharia principles.
2. To build a healthy, rapidly growing Sharia financial institution that benefits the community.
3. To encourage the establishment of a Sharia financial learning center.
4. To achieve prosperity for the bank's stakeholders.
5. To promote the creation of a synergistic network in business development, especially in agriculture-based ventures.



**Imam Haryanto**

President Director

- PT BPRS BOTANI BINA RAHMAH**  
Jl. Raya Babakan No. 26 Dramaga – Kab. Bogor 16680
- BPRS Botani
- bprs.botani
- bprsbotani [www.bprsbotani.co.id](http://www.bprsbotani.co.id)

# Product & Services



BPRS Botani offers a savings product designed to secure your assets while ensuring ease of transactions in line with Sharia principles. The savings options include Amanah Savings, Rahmah Savings, Bimapan Savings, Simapan Savings, Umrah Savings, Qurban Savings, and Rahmah Deposit. The Rahmah Deposit is a term investment product that provides a profitable profit-sharing arrangement between the customer and BPRS Botani, with earnings distributed monthly based on the agreed term.



BPRS Botani's financing products offer quick and effective solutions while adhering to Sharia principles. Financing is available for employees, research, product and vehicle purchases, MSME entrepreneurs, civil servants or non-civil servants, home renovations, and general financing. The maximum loan term is 60 months with a ceiling of IDR 2 billion.



BPRS Botani offers the Wakaf for Seed Farmers program to empower local farmers through productive wakaf. This initiative provides farmers with access to capital, modern equipment, and innovative technologies to improve production and livelihoods. Wakaf funds are used for superior seeds, technical training, and entrepreneurial coaching, promoting higher agricultural output, food security, and sustainability. Managed transparently, the program ensures long-term benefits. Join us in supporting the future of farmers through BPRS Botani's productive wakaf program.

## Client/Partner





Strategic Business Unit of BLST specializes in providing facilities for meetings, incentives, conferences, and exhibitions (MICE).



## IPB INTERNATIONAL CONVENTION CENTER & HOTEL

IPB International Convention Center is the premier location to host conventions, meetings, banquets, and other activities, both large and small, for 10 to 2,000 persons. It offers more than 2,000 square meters of banquet space, including one of the city's largest ballrooms in Bogor. It is the ideal place for organizing international conferences, seminars, and business meetings, providing 7 well-appointed meeting rooms that can accommodate from 10 to 1,500 delegates.

- Perfect Location
- Excellent Services
- Delicious Food
- Good Vibes

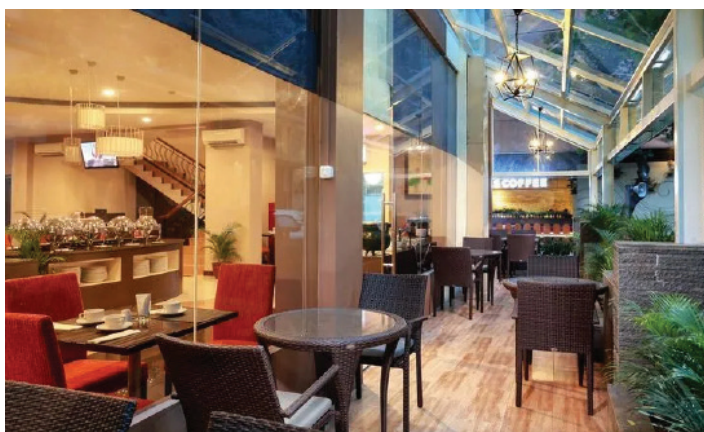
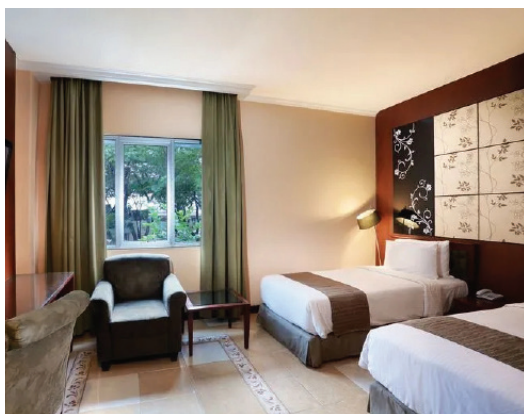
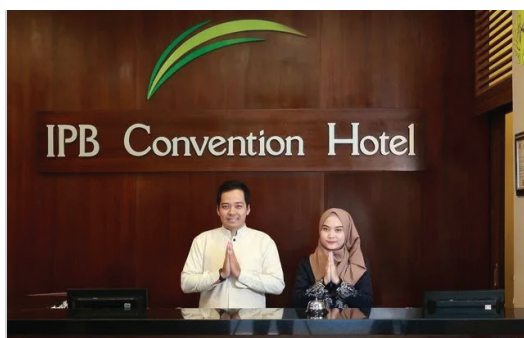


### Rio Rogers Manarisip

General Manager

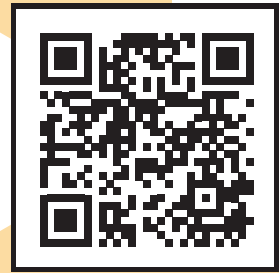
- IPB International Convention Center**  
Botani Square Building  
Jl. Pajajaran, Bogor Tengah, Kota Bogor,  
Jawa Barat – Indonesia 16127
- @ipbconventioncenter
- IPB International Convention Center
- [www.ipbconventioncenter.com](http://www.ipbconventioncenter.com)

## The Largest Convention Center in Bogor, Indonesia



Facilities consist of 83 hotel rooms with Suite (36 sqm), Executive (24 sqm), Deluxe (22 sqm) and Standard (19 sqm) types as well as 10 guest house rooms.

Located in the heart of Bogor, IPB Convention Hotel is connected to Mall Botani Square, IPB International Convention Center and airport bus terminal.



# BOTANI SQUARE MALL

The Best Shopping Center in Bogor, Indonesia





**Hotel Santika**  
BOGOR

**PT GRAHAWITA CENDEKIA**



Strategic location to enjoy your life



# *Business Innovation Collaboration*



-  Jalan Taman Kencana No. 3  
Bogor City West Java  
Indonesia, 16128
-  (+62251) 8384422
-  [info@blst.co.id](mailto:info@blst.co.id)
-  [www.blst.co.id](http://www.blst.co.id)
-  [blstipb](#)
-  BLST : Holding Company of IPB
-  BLST IPB

**Holding Company  
of IPB University**